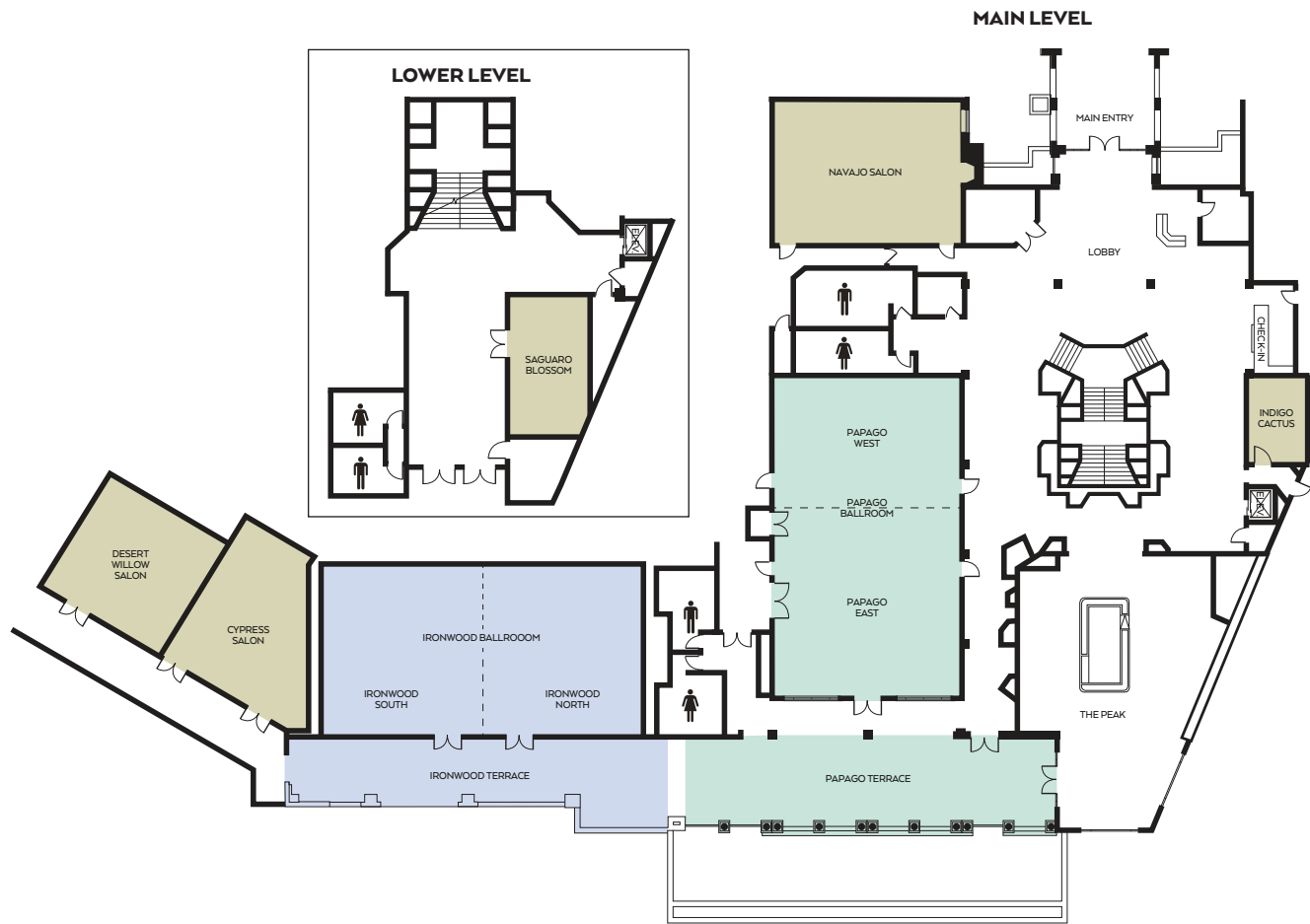


OMNI TUCSON NATIONAL RESORT MEETING SPACE



OMNI TUCSON NATIONAL RESORT MEETING ROOM CAPACITY

	SQUARE FOOTAGE	DIMENSIONS	CEILING HEIGHT	AIR WALLS	THEATER	CLASSROOM 18"	CLASSROOM 30"	BANQUET 60"	RECEPTION	CONFERENCE	HOLLOW SQUARE
PAPAGO											
PAPAGO BALLROOM	2,870	70' x 41'	12'6"	YES	290	198	120	240	350	—	80
PAPAGO EAST	1,558	38' x 41'	12'6"	YES	155	70	55	100	130	25	42
PAPAGO WEST	1,312	32' x 41'	12'6"	YES	130	52	35	90	110	25	36
PAPAGO TERRACE	2,000	—	12'6"	—	—	—	—	140	190	—	—
IRONWOOD											
IRONWOOD BALLROOM	2,652	68' x 39'	12'6"	YES	225	160	100	220	300	—	72
IRONWOOD SOUTH	1,326	34' x 39'	12'6"	YES	90	50	40	90	110	25	36
IRONWOOD NORTH	1,326	34' x 39'	12'6"	YES	90	50	40	90	110	25	36
IRONWOOD TERRACE	1,000	—	12'6"	—	—	90	72	60	120	—	—
INDIVIDUAL SPACES											
CYPRESS SALON	1,054	32' x 31'	12'6"	—	70	40	27	50	90	25	25
DESERT WILLOW SALON	783	27' x 29'	12'6"	—	50	36	25	50	70	25	20
NAVAJO SALON	1,270	41' x 31'	12'6"	—	110	50	36	80	110	20	34
INDIGO CACTUS	247	19' x 13'	9'4"	—	—	—	—	—	—	10	—
SAGUARO BLOSSOM	368	16' x 23'	9'	—	40	15	10	30	35	10	15
OUTDOOR SPACES											
MESQUITE GULCH	5,400	—	—	—	—	—	—	360	450	—	—
SWEETWATER POOL	1,500	—	—	—	—	—	—	130	168	—	—
NORVILLE LAWN	6,000	—	—	—	—	—	—	400	500	—	—

Meeting room capacities are determined by the use of the "Arranger & Comfort Calculator," a standardized meeting room capacity measurement system used by Meeting Professionals International. 60" banquet capacities are based on 10 persons per table.