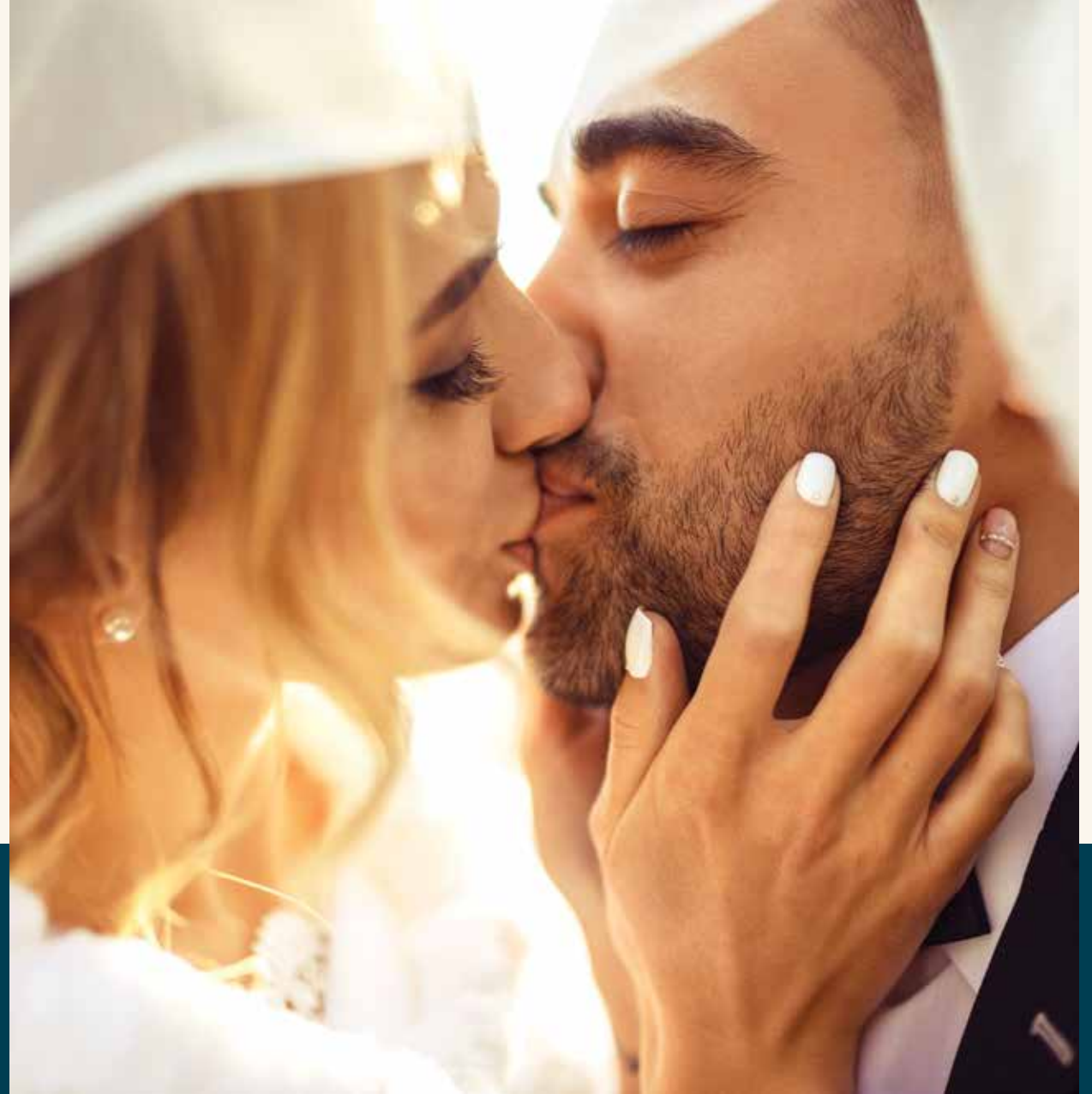


*where*  
fairytales begin.  
wedding brochure



OMNI  
KING EDWARD





# Table *of* Contents.

03. INTRO

04. ABOUT

06. VENUES

# *old-world* charm in modern Toronto.

Since opening our doors in 1903, The Omni King Edward Hotel has been redefining the luxury hotel experience. Now reimagined for the 21st century, this Toronto landmark will bring vintage charm and unmatched elegance to your wedding celebration.

Three grand ballrooms still maintain their historic character, with unique features like dramatic columns, intricate molding, or the stunning arched dome ceiling of the Vanity Fair Ballroom. In these spaces, couples can say their vows in timeless grandeur and rejoice with friends and family in truly one-of-a-kind surroundings.





*about*  
The Omni King  
Edward Hotel.

**GET THE ROYAL TREATMENT**

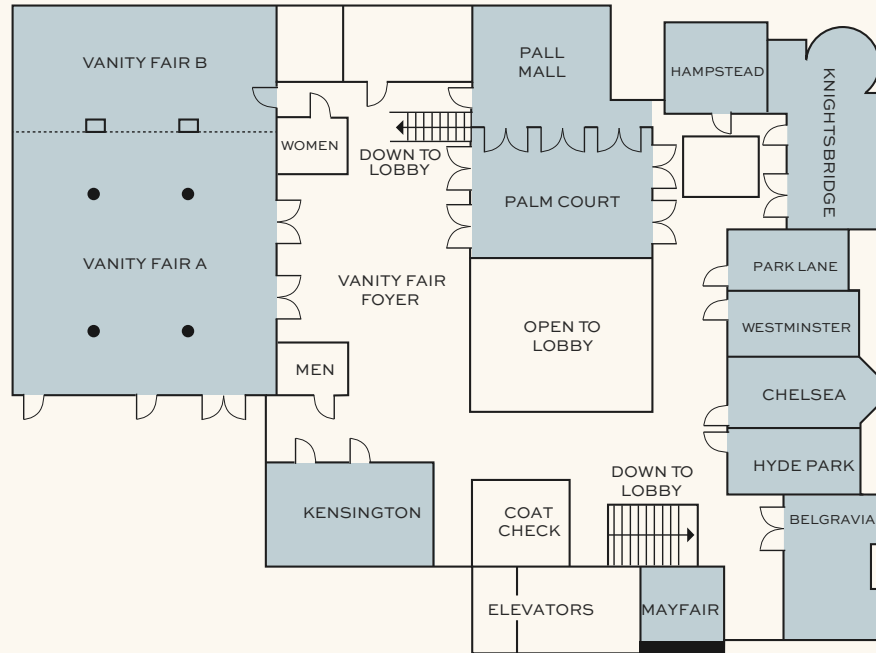
As Toronto's first luxury hotel, The Omni King Edward Hotel has been leading the way in style and comfort for over 120 years. Comfortable guest rooms create an urban sanctuary, punctuated with pops of regal red. Treat yourself to afternoon tea at Victoria Café with a tiered tray of tidy macarons and delicate choux pastries. After a relaxing treatment at Mokara Spa, you'll be ready for anything the day has in store.





- 301 spacious guest rooms featuring modern decor and regal elegance
- Three opulent ballrooms including the Crystal Ballroom wrapped in floor-to-ceiling windows and lit by glittering crystal chandeliers, the Sovereign Ballroom with 24-foot ceilings and walls adorned in intricate plasterwork and the Vanity Fair Ballroom with a stunning arched dome ceiling and stately columns
- Two unique dining experiences, including the elegant Victoria Café with seasonal and local ingredients for a fresh breakfast or classic afternoon tea, and The Consort Bar offering succulent entrées and small bites in an aristocratic space
- Mokara Spa, offering revitalizing skin and body treatments in a 6,000 square foot space including men's steam room and women's dry sauna
- Expansive state-of-the-art fitness center with Precor cardio equipment, free weights, weight machines and stretching/yoga area

# Second level.

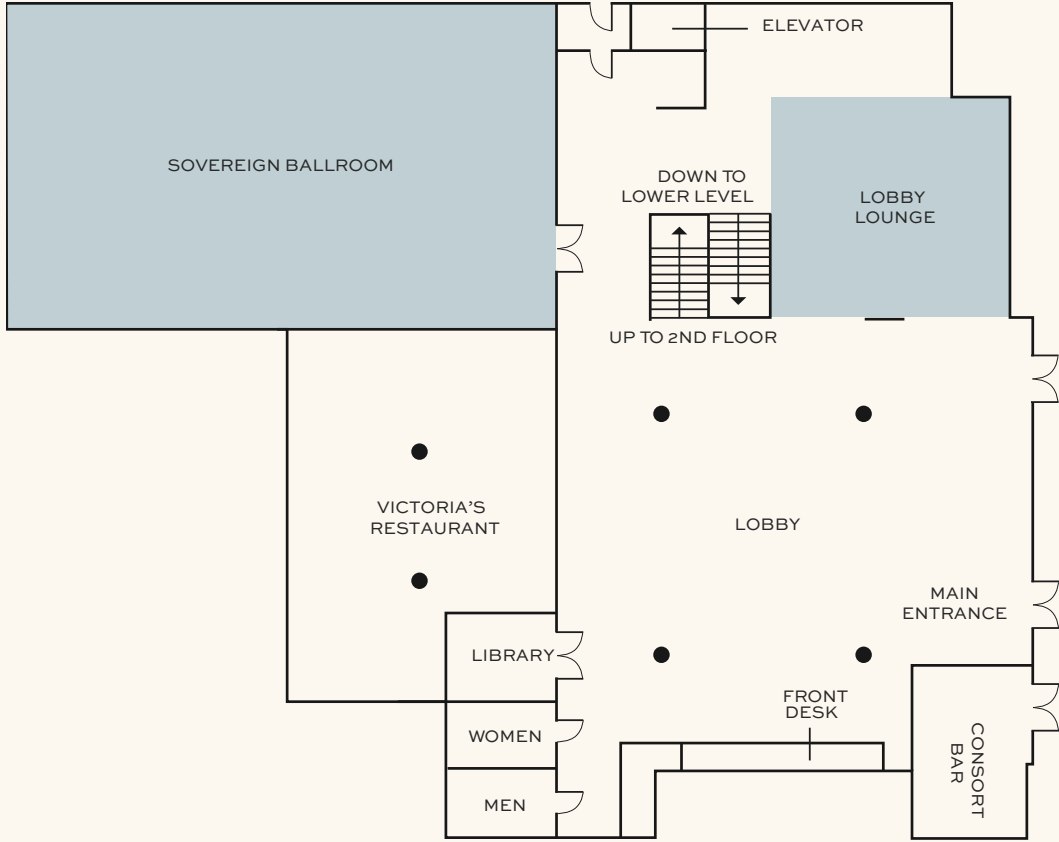


EVENT CAPACITIES WERE DETERMINED USING 72" ROUNDS OF 10 (ROUNDS CAPACITY)

	SQUARE FOOTAGE	DIMENSIONS LXW	CEILING HEIGHT	THEATER	CLASSROOM	BANQUET	RECEPTION	HOLLOW SQUARE	U-SHAPE	BOARD-ROOM	DINNER/DANCE
<b>MEZZANINE</b>											
BOARDROOM A	2256	18' X 14'	9'	-	-	-	-	-	-	10	-
BOARDROOM B	201	15' X 13'	10'	-	-	-	-	-	-	6	-
BOARDROOM C	226	15'6" X 14'	10'	-	-	-	-	-	-	8	-
<b>SECOND LEVEL</b>											
BELGRAVIA	696	35'6" X 20'	9'	60	30	40	65	32	28	28	-
CHELSEA	561	32' X 17'6"	10'	35	21	30	40	24	20	20	-
HAMPSTEAD	451	21'6" X 21'	10'6"	30	18	20	30	20	16	14	-
HYDE PARK	477	28'6" X 16'6"	10'	30	18	20	40	24	20	20	-
KENSINGTON	860	25' X 34'	10'6"	65	42	50	70	36	32	32	30
KNIGHTSBRIDGE	982	44'6" X 22'	10'6"	70	42	60	90	38	34	34	50
MAYFAIR	451	21'6" X 21'	9'	-	-	10	-	-	-	-	-
PALL MALL/PALM COURT	1974	30'6" X 67'	10'	-	-	120	160	-	-	-	80
PALL MALL	881	30' X 29'	10'	50	30	40	60	28	24	18	-
PALM COURT	1080	30'6" X 35'6"	9'6"	-	-	80	100	-	-	-	-
PARK LANE	384	27'6" X 14'	10'	-	-	-	-	-	-	18	-
VANITY FAIR BALLROOM	5279	55' X 96'	11'6"	420	180	330	500	62	51	44	290
VANITY FAIR A	3850	55' X 70'	11'6"	320	150	250	350	62	51	44	200
VANITY FAIR B	1308	55' X 24'	11'6"	100	48	80	150	48	44	40	-
WESTMINSTER	419	26'6" X 15'	10'	-	-	-	-	-	-	18	-



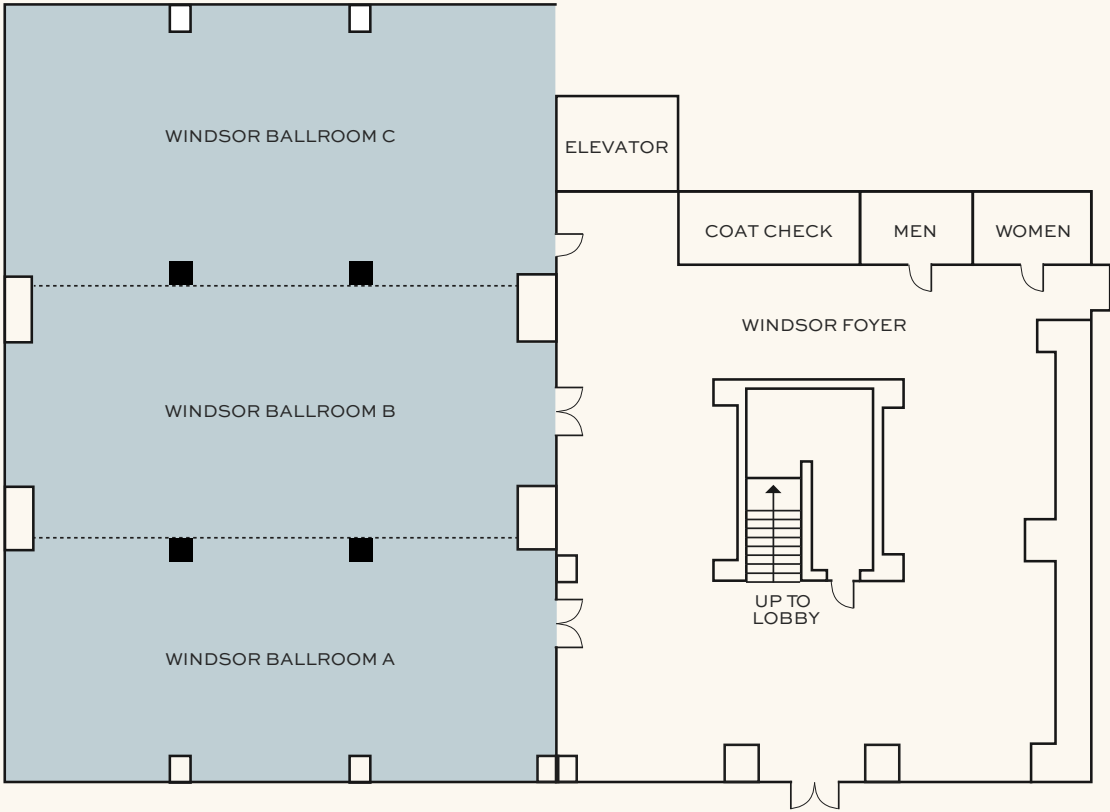
# Lobby level.



EVENT CAPACITIES WERE DETERMINED USING 72" ROUNDS OF 10 (ROUNDS CAPACITY)

	SQUARE FOOTAGE	DIMENSIONS LXW	CEILING HEIGHT	THEATER	CLASSROOM	BANQUET	RECEPTION	HOLLOW SQUARE	U-SHAPE	BOARD-ROOM	DINNER/DANCE
<b>LOBBY</b>											
SOVEREIGN BALLROOM	3312	72' X 46'	24'	300	150	220	400	80	70	80	180
LOBBY LOUNGE	1543	40'6" X 38'	9'	40	20	70	150	-	-	20	60

# Lower level.

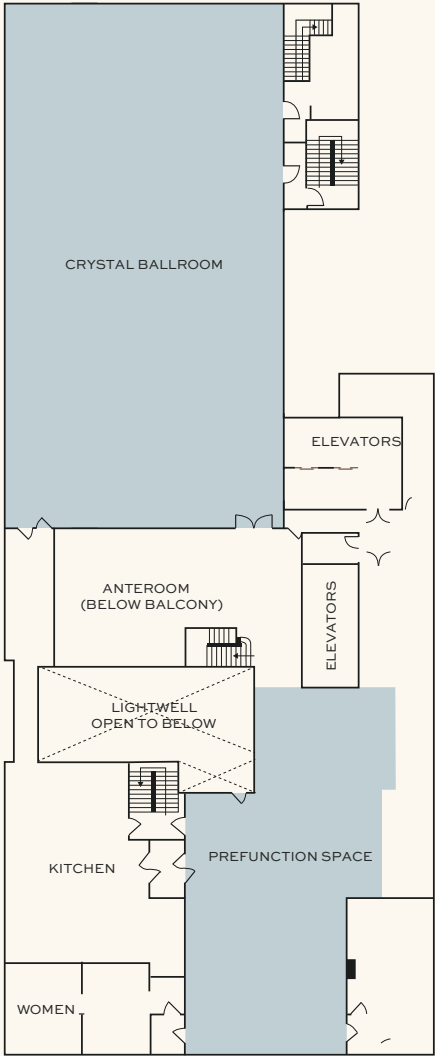


EVENT CAPACITIES WERE DETERMINED USING 72" ROUNDS OF 10 (ROUNDS CAPACITY)

	SQUARE FOOTAGE	DIMENSIONS LXW	CEILING HEIGHT	THEATER	CLASSROOM	BANQUET	RECEPTION	HOLLOW SQUARE	U-SHAPE	BOARD-ROOM	DINNER/DANCE
<b>LOWER LEVEL</b>											
WINDSOR BALLROOM	3402	63' X 54'	9'	160	120	210	300	73	65	46	160
WINDSOR A	973	18' X 54'	9'	60	36	50	90	44	42	46	-
WINDSOR B	1134	21' X 54'	9'	80	54	80	110	48	44	46	-
WINDSOR C	1297	24' X 54'	9'	76	54	80	125	48	44	46	-



# 17th floor.



	SQUARE FOOTAGE	DIMENSIONS LXW	CEILING HEIGHT	THEATER	CLASSROOM	BANQUET	RECEPTION	HOLLOW SQUARE	U-SHAPE	BOARD-ROOM	DINNER/DANCE
<b>17TH FLOOR</b>											
CRYSTAL BALLROOM	4445	92' X 48'6"	24'	330	180	300	330	80	-	-	240
PREFUNCTION	2072	-	9'	-	-	-	-	-	-	-	-

EVENT CAPACITIES WERE DETERMINED USING 72" ROUNDS OF 10 (ROUNDS CAPACITY)

# *The* wedding experience.

Our grand hotel is a magical setting designed for memorable and joyous celebrations. Whether you are hosting your wedding reception, rehearsal dinner or post wedding brunch, the hotel's experienced wedding team will take you through every step in the process to ensure that no details are missed. Our experienced and passionate team of professionals will personally attend to your every wish. It's your wedding. It should be customized to suit your dreams. The wedding team will help with all the details – even the ones you haven't thought about – to make sure they create memories that last a lifetime.



# Our distinctive ballrooms.

## SOVEREIGN BALLROOM

An iconic setting and a rich past, this ballroom has seen its share of history unfold. With enough space for 150 guests, this ornate ballroom, located on the lobby level features 24-foot-high ceilings, floor to ceiling windows, beautiful Edwardian accents and striking original moldings that has been in place since the hotel was built in 1903.

## VANITY FAIR BALLROOM

This stunning ballroom has been the setting for many elaborate social events over the ages. The moment you enter, your eyes will be drawn upward to the unique domed ceiling, adorned with two large teardrop chandeliers. The ballroom can accommodate up to 250 guests and is adjacent to the Pall Mall and Palm Court, which provides the perfect reception space overlooking the Hotel's main lobby.

## THE CRYSTAL BALLROOM

Align your love story with other iconic moments in history in our renovated Crystal Ballroom. Originally opened in the 1920's, this Ballroom was truly ahead of its time and played host to royalty, the social elite, actors, actresses and musicians alike. Located on the 17th floor of the Hotel, your guests will feel like they are floating in a dream above the city. This prestigious and sought after venue was fully renovated and reopened to the public in 2017 and offers 6,500 square feet to accommodate up to 270 guests. Enjoy this timeless space with ornate moldings, crystal starburst chandeliers, floor to ceiling windows and stunning city views.



CRYSTAL BALLROOM

# Wedding packages.

Some traditions never go out of style, like the art of fine dining and impeccable service. Our master chefs are inspired by fresh and local flavours and understand the importance of top-quality food and have carefully crafted three exquisite menus to please every palate. Our promise is to make your wedding spectacular by offering a complement of Wedding Packages.

## RUBY WEDDING PACKAGE

### INCLUDES:

- Butler passed hors d'oeuvres based on four (4) pieces per guest
- Custom three course plated dinner
- 7 Hour Deluxe open bar
- Sparkling Wine Toast with Dinner
- Late night Coffee Station
- Menu tasting for the Bride and Groom
- Omni King Edward menus at each place setting
- White floor length linens and napkins
- Chiavari Chairs
- Complimentary Deluxe Bridal Suite on your wedding night
- Breakfast for two in your suite the following morning
- Valet Parking for the wedding couple
- Special guestroom rate for your guests







## SAPPHIRE WEDDING PACKAGE

### INCLUDES:

- Butler passed hors d'oeuvres based on five 5 pieces per guest
- Custom four course plated dinner
- 7-hour Premium open bar
- Menu tasting for the Bride & Groom plus four guests
- Omni King Edward menus at each place setting
- Crystal King Edward white specialty tablecloths and napkins
- Custom Glass and Gold rim charger plates
- Chiavari chairs
- Complimentary Luxury Bridal Suite on your wedding night
- Breakfast for two in your suite the following morning
- Valet Parking for the wedding couple & parents (maximum 3)
- Complimentary one-night stay on your first anniversary date (subject to availability)
- Special guestroom rate for your guests

## DIAMOND WEDDING PACKAGE

### INCLUDES:

- Butler passed hors d'oeuvres based on 7 pieces per guest
- Custom four course plated dinner
- 7-hour Premium open bar
- 2 Late Night Items per person (sweet or savoury) from our Late-night selections list
- Menu tasting for the Bride & Groom plus four guests
- Omni King Edward menus at each place setting
- Crystal King Edward white specialty tablecloths and napkins
- Custom Glass and Gold rim charger plates
- Chiavari chairs
- Increased Staffing ratios
- Complimentary Luxury Bridal Suite on your wedding night
- Breakfast for two in your suite the following morning
- Valet Parking for the wedding couple & parents (maximum 3)
- Complimentary one-night stay on your first anniversary date (subject to availability)
- Special guestroom rate for your guests

# Let the celebration begin.

## **BRIDAL SHOWER TEA PARTY**

Partake in the Hotel's time honoured tradition of Afternoon Tea as the perfect setting to gather your friends and family together for an afternoon of fun and celebrations. Our Teas are created seasonally to offer you the best and freshest selection of sweet and savoury treats.

## **THE DAY AFTER BREAKFAST OR BRUNCH**

Enjoy a final send off with family and friends as you host a breakfast the day after your special occasion. Your Wedding Team can assist in booking one of our private function rooms and offering one of our enticing breakfast or brunch menu offerings.

For smaller groups of under 15 people, we can also assist in making reservations in our Victoria's café, serving breakfast between 7:30am to 11:30am on weekends.



# The ultimate spa day.

Discover a new level of relaxation at Canada's first Mokara Spa. The welcoming tranquility of our luxurious destination spa will have you feeling revived, rejuvenated, and restored. Prepare to be treated like royalty when you step through the doors. Perfect for groups, the spa boasts a sauna, steam room, and seven treatment rooms including an elegant couple's suite.







*forever*  
starts here.

[OMNIHOTELS.COM/TORONTO](https://omnihotels.com/toronto)

CONNECT WITH A WEDDING SPECIALIST

416.863.3241

[TORDTN.LEADS@OMNIHOTELS.COM](mailto:TORDTN.LEADS@OMNIHOTELS.COM)

**OMNI**  
KING EDWARD