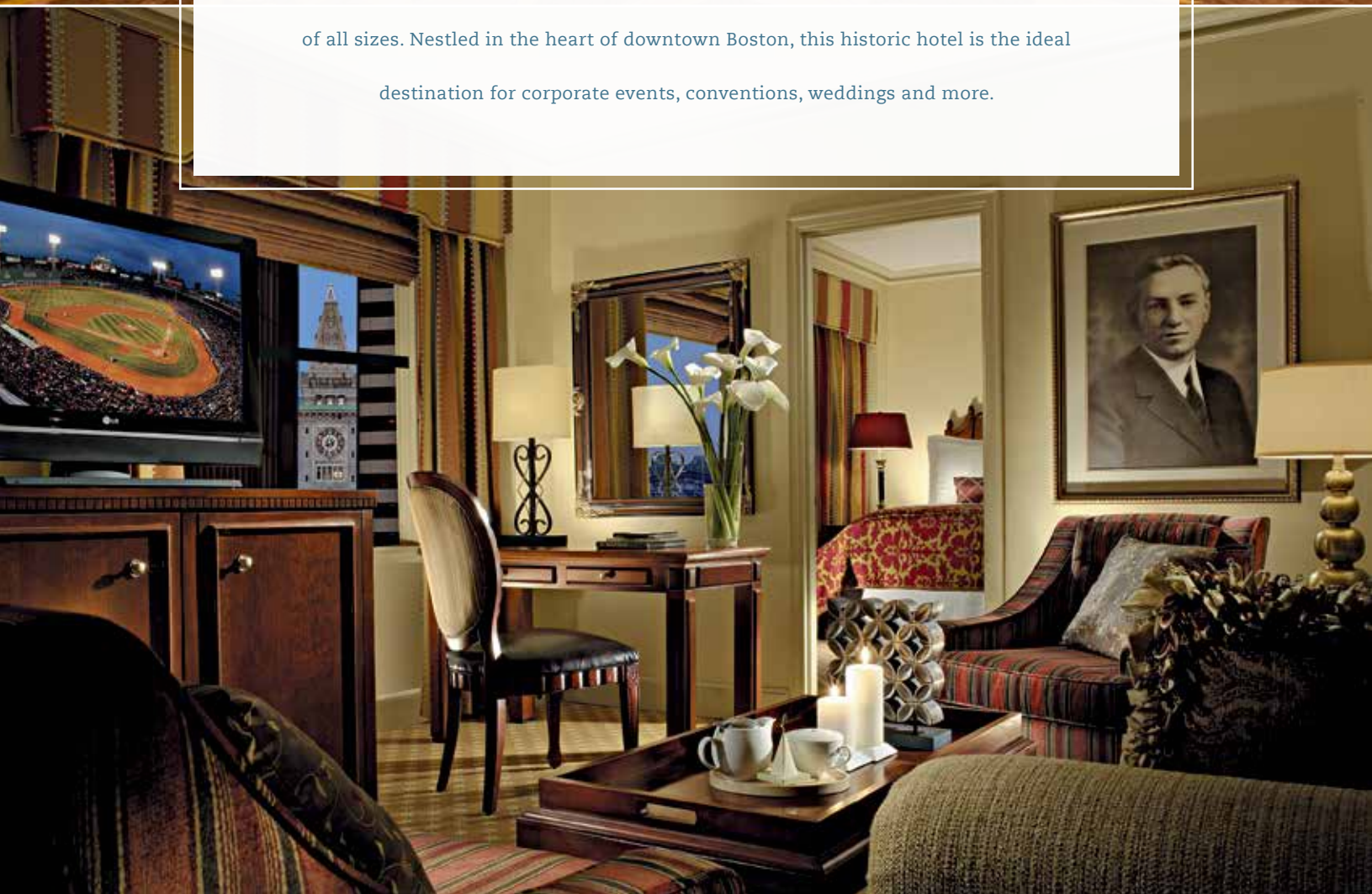




A CLASSIC SOUL WITH A MODERN TWIST

Versatile meeting space makes the Omni Parker House the perfect destination for events of all sizes. Nestled in the heart of downtown Boston, this historic hotel is the ideal destination for corporate events, conventions, weddings and more.



BOSTON HIGHLIGHTS

Located 10 minutes from the Boston Logan International Airport. The hotel is located directly on the Freedom Trail, a historic walking tour.

ATTRACTIONS

Fenway Park
 New England Aquarium
 Old Town Trolley Tours
 Boston Common
 Public Garden
 Boston Harbor
 Rose Kennedy Greenway

ARTS & CULTURE

USS Constitution
 Financial District
 Government Center
 Beacon Hill
 The State House
 Theater District
 Museum of Fine Arts

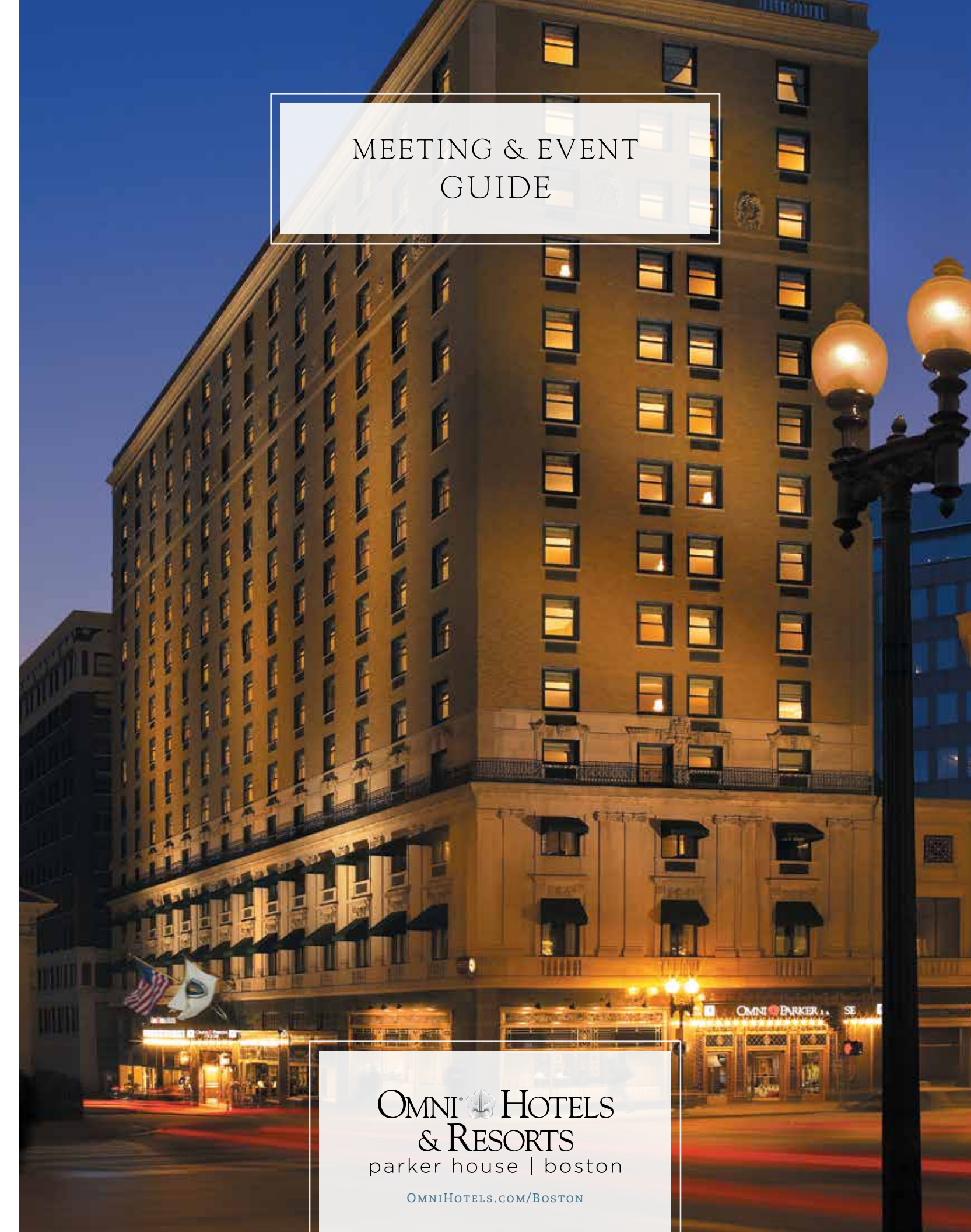
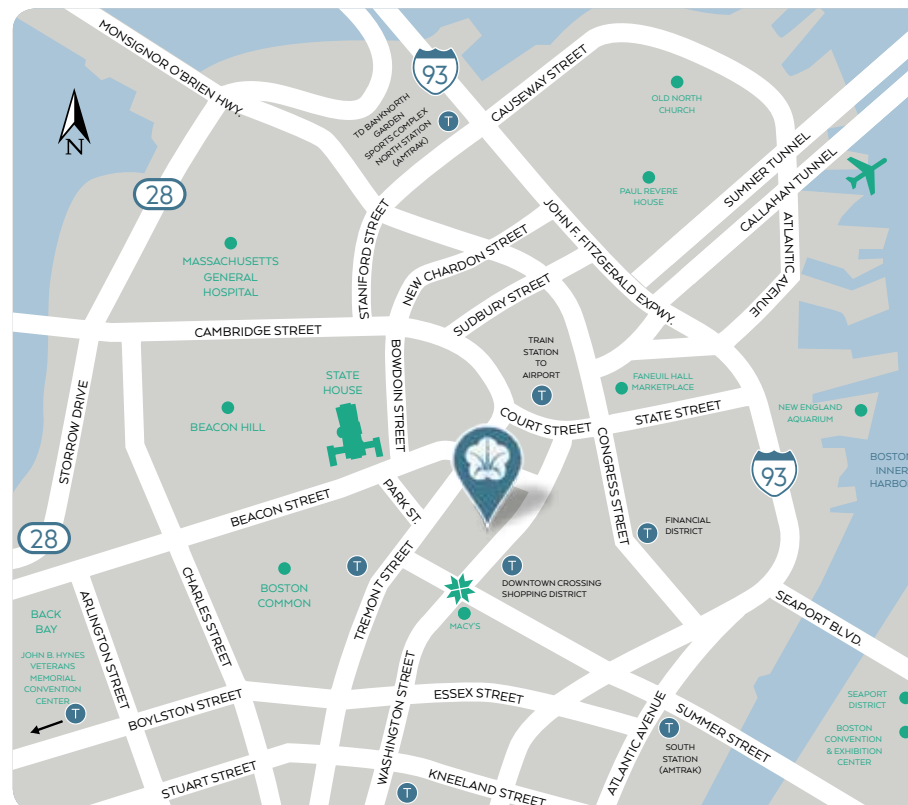
SHOPPING

Faneuil Hall Marketplace
 Quincy Market
 Downtown Crossing
 Prudential Center
 Copley Place

DINING & ENTERTAINMENT

Parker's Restaurant
 Parker's Bar
 The Last Hurrah

OMNI PARKER HOUSE
 60 SCHOOL STREET
 BOSTON, MA 02108
 617-227-8600
 OMNIHOTELS.COM/BOSTON



MEETING & EVENT GUIDE

OMNI HOTELS
 & RESORTS
 parker house | boston

OMNIHOTELS.COM/BOSTON

ABOUT OMNI PARKER HOUSE



WORLD-CLASS CHARM

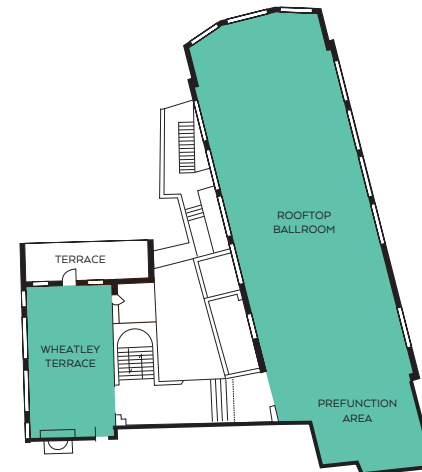
Celebrating over 160 years of service excellence, the Omni Parker House originally opened in 1855 and holds the unique distinction of being America's longest continuously-operating hotel. The hotel offers an unequalled blend of historic charm, modern amenities and outstanding location. It's the ideal destination for both leisure and business travellers seeking to make the most of their stay in Boston.

NEVER STAY THE SAME

- 551 beautifully appointed guest rooms and suites
- 19 contemporary meeting rooms featuring the 3,513-square-foot re-imagined Rooftop Ballroom
- 400-person theater capacity
- 300-person banquet capacity
- On-site audio/visual equipment services with WiFi Internet access
- 24-hour, fully-equipped fitness center, available for use for all our guests

OMNI PARKER HOUSE MEETING SPACE

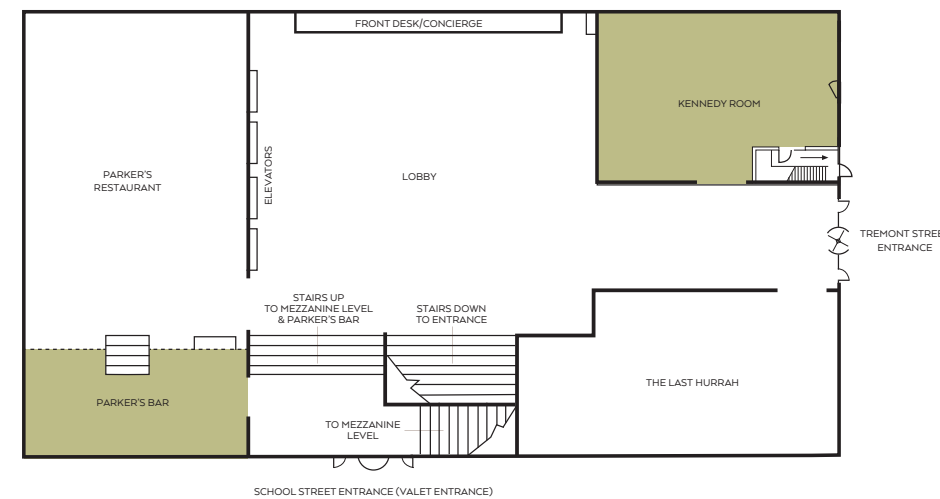
ROOFTOP LEVEL - 15TH FLOOR



MEZZANINE LEVEL



LOBBY LEVEL



OMNI PARKER HOUSE MEETING ROOM CAPACITY

	SQUARE FOOTAGE	DIMENSIONS	CEILING HEIGHT	PORTABLE WALLS	THEATER	CLASSROOM 18'	CLASSROOM 18'	BANQUET 60'	BANQUET 72'	RECEPTION	U-SHAPE	HOLLOW SQUARE	EXHIBITS 8'X10'	EXHIBITS TABLE TOPS
ROOFTOP LEVEL														
BALLROOM	3,513	91' x 38'6"	15'	NO	400	225	140	256	320	400	—	—	15	36
WHEATLEY TERRACE	972	43' x 22'6"	10'	NO	80	42	28	72	80	100	30	32	6	10
PREFUNCTION AREA	585	28' x 20'9"	10'	NO	—	—	—	—	—	—	—	—	—	—
MEZZANINE LEVEL														
LOUISA MAY ALCOTT	2,160	60' x 36'	13'2"	YES	240	125	80	128	180	232	50	54	8	20
ALCOTT A	792	22' x 36'	13'2"	YES	55	30	20	48	60	50	24	26	4	8
ALCOTT B	1,368	38' x 36'	13'2"	YES	90	48	32	80	100	100	30	32	6	12
PREFUNCTION	1,612	52' x 31'	9'4"	NO	—	—	—	—	—	174	10	—	—	8
PRESS ROOM	1,980	60' x 33'	10'10"	NO	220	125	80	120	160	211	50	54	9	20
KING ROOM	1,344	56' x 24'	10'10"	NO	100	54	36	96	120	140	30	34	8	14
HARRIET BEECHER STOWE	703	37' x 19'	9'6"	NO	55	30	20	48	60	60	28	30	—	—
ISABELLA STEWART GARDNER	608	38' x 16'	9'6"	NO	36	24	16	32	40	40	18	22	—	—
LONGFELLOW ROOM	538	24' x 21'	9'	NO	40	21	14	32	40	40	16	18	—	—
BRANDEIS ROOM	480	20' x 24'	10'10"	YES	40	21	14	32	40	40	16	18	—	—
HOLMES ROOM	480	20' x 24'	10'10"	YES	40	21	14	32	40	40	16	18	—	—
LOWELL ROOM	480	20' x 24'	10'10"	YES	40	21	14	32	40	40	16	18	—	—
HUTCHINSON ROOM	480	20' x 24'	10'10"	YES	40	21	14	32	40	40	16	18	—	—
DICKENS ROOM	425	17' x 25'	10'10"	NO	20	12	8	24	30	20	15	17	—	—
HAWTHORNE ROOM	352	16' x 22'	9'9"	NO	20	9	6	16	20	15	14	16	—	—
WHITTIER ROOM	336	14' x 24'	10'10"	NO	20	9	6	16	20	15	14	16	—	—
LOBBY LEVEL														
KENNEDY ROOM	2,040	60' x 34'	14'	NO	220	100	80	128	160	225	50	54	7	20
PARKER'S BAR	1,161	43' x 27'	9'	NO	—	—	—	65	—	90	—	—	—	—
SUITE LEVEL														
PARKER SUITE	624	39' x 16'	8'10"	NO	—	—	—	—	—	—	—	—	—	—

Floorplan not shown for Parker Suite.

