

# Meetings & Event Guide.

OMNI BEDFORD SPRINGS RESORT



EXPERIENCES MATTER HERE



OMNI  
BEDFORD SPRINGS

# Table of Contents

MEETINGS & EVENTS OVERVIEW .....	01
ABOUT.....	02
EVENT VENUES .....	04
HIGHLIGHTS.....	07



## Where Incredible STORIES BEGIN.

Be inspired by spectacular views of the Allegheny Mountains at your next group meeting or event at Omni Bedford Springs Resort. With inviting guest rooms and suites, two swimming pools, a luxury spa, award-winning golf course and leisure activities perfect for team building, there's plenty to entertain guests when the working day is complete.

Choose from 20,000 square-feet of indoor meeting spaces, including indoor mill space, and 36,000 square feet of outdoor space for your event or presentation. Several onsite restaurants, coffee shops and inviting lounges with seasonal dishes, fine wines and artisanal brews satisfy the senses. Extend your stay at Omni Bedford Springs to experience everything this historic and welcoming resort has to offer.





*about*  
Omni Bedford  
Springs Resort.

**A HISTORIC RESORT OF “FIRSTS”**

Omni Bedford Springs Resort is home to one of America's first indoor swimming pools, one of the country's first golf courses and indigenous inspired spa treatments first used by Native Americans. A range of unique, personalized services and experiences await - from chef's table dining and historic tours, to wine tasting and exhilarating adventures in the mountains.



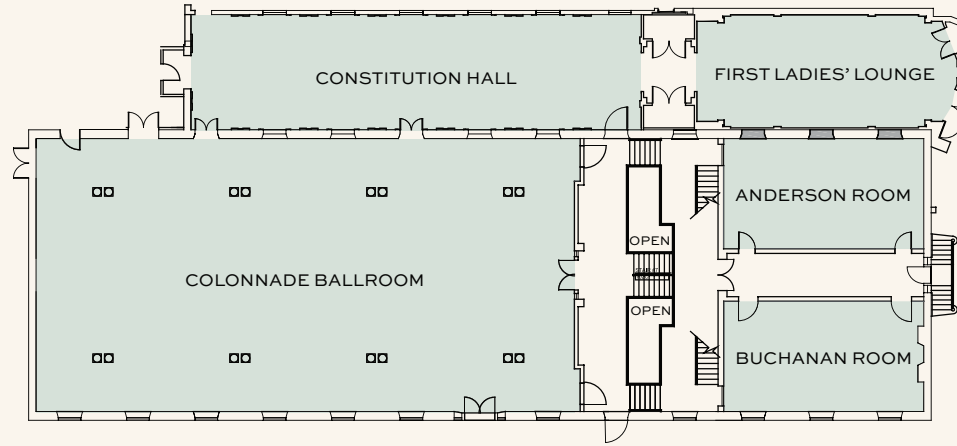
# An event to remember

- 216 beautifully appointed guest rooms including four suites inspired by the resort's rich heritage
- Two elegant ballrooms, a grand hall and meeting rooms indoors, and outdoor lawns and verandas to host memorable gatherings
- Fast Wi-Fi, the latest AV technology and helpful professional services
- Seasonal outdoor pool with bar and private cabanas and a year-round heated indoor swimming pool with an Art Nouveau ambience
- Several unique dining experiences including Tillie's at the Clubhouse for all day dining, 1796 Room and the Crystal Room for intimate gatherings and Frontier Tavern serving hearty food accompanied by artisanal beers and cocktails
- Evitt House Coffee serving sustainably sourced coffee, shakes and snacks and the prohibition-era Lobby Bar with an extensive signature drinks menu
- The Springs Eternal Spa menu features natural indigenous inspired treatments, salon services and the rejuvenating Bedford Bath Ritual
- Award-winning, 18-hole Old Course - recently restored to its original 1895 golf course layout
- Onsite activities including UTV's, archery, tennis, history tours, biking, hiking and lawn games and more
- Offsite activities including fly fishing, kayaking and water sports, laser shooting range, trap shooting, bowling





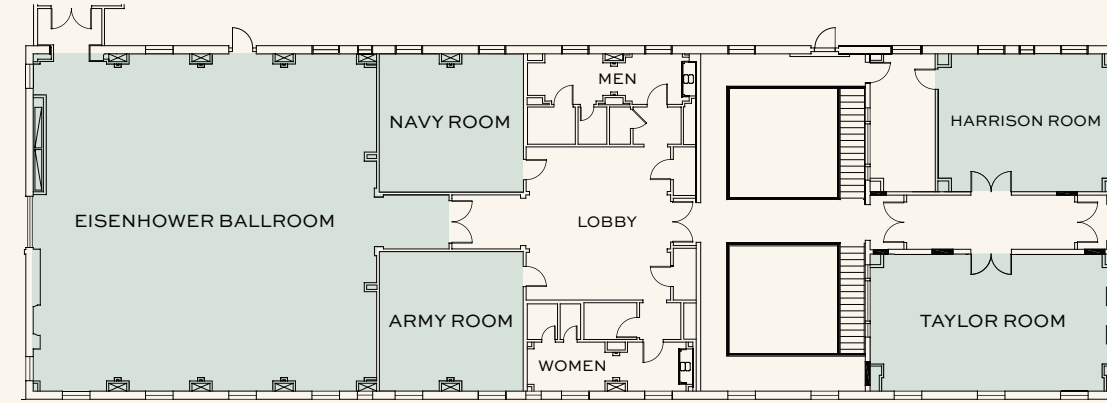
# Colonnade building – First floor..



	SQUARE FOOTAGE	DIMENSIONS	CEILING HEIGHT	THEATER	CLASSROOM	U-SHAPE	HOLLOW SQUARE	CONFERENCE	CRESCENT ROUNDS OF 6	EXHIBITS (6X10)	EXHIBITS (6' TABLE TOP)	RECEPTION	ROUNDS OF 10
<b>COLONNADE BUILDING - FIRST FLOOR</b>													
COLONNADE BALLROOM	4802	98' X 49'	13'6"	288	156	87	90	78	180	27	49	316	300
CONSTITUTION HALL	1701	81' X 21'	13'6"	128	-	-	-	-	-	13	17	167	-
FIRST LADIES' LOUNGE	940	47' X 20'	8'0"	-	-	-	-	-	-	3	7	83	-
BUCHANAN ROOM	720	36' X 20'	9'6"	55	24	27	30	30	24	5	7	78	40
ANDERSON ROOM	720	36' X 20'	9'6"	55	24	27	30	30	24	5	7	78	40

Meeting room capacities were determined using 60" rounds of 10 (rounds capacity), three chairs per 6'x18" table (U-shape hollow square, classroom and conference style capacities) allowing for minimal audiovisual equipment.

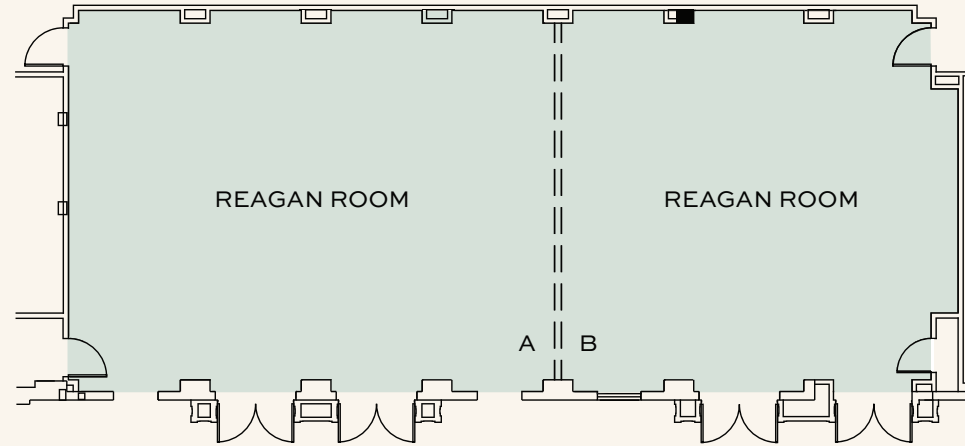
# Colonnade building – Second floor..



	SQUARE FOOTAGE	DIMENSIONS	CEILING HEIGHT	THEATER	CLASSROOM	U-SHAPE	HOLLOW SQUARE	CONFERENCE	CRESCENT ROUNDS OF 6	EXHIBITS (6X10)	EXHIBITS (6' TABLE TOP)	RECEPTION	ROUNDS OF 10
<b>COLONNADE BUILDING - SECOND FLOOR</b>													
EISENHOWER BALLROOM	2,550	51' X 50'	9'6"	168	108	45	60	36	96	14	26	169	160
ARMY ROOM	441	21' X 21'	9'6"	24	18	15	18	12	18	3	4	30	30
NAVY ROOM	441	21' X 21'	9'6"	24	18	15	18	12	18	3	4	30	30
TAYLOR ROOM	720	36' X 20'	9'6"	55	24	27	30	30	24	5	7	49	40
HARRISON ROOM	520	26' X 20'	9'6"	34	18	18	24	18	18	2	5	40	30

Meeting room capacities were determined using 60" rounds of 10 (rounds capacity), three chairs per 6'x18" table (U-shape hollow square, classroom and conference style capacities) allowing for minimal audiovisual equipment.

# Evitt building – Ground floor.



	SQUARE FOOTAGE	DIMENSIONS	CEILING HEIGHT	THEATER	CLASSROOM	U-SHAPE	HOLLOW SQUARE	CONFERENCE	CRESCENT ROUNDS OF 6	EXHIBITS (6X10)	EXHIBITS (6' TABLETOP)	RECEPTION	ROUNDS OF 10
<b>EVITT BUILDING - GROUND FLOOR</b>													
REAGAN BALLROOM	2,100	70' X 30'	11'0"	182	90	63	72	54	96	14	25	221	160
REAGAN A	1,140	38' X 30'	11'0"	112	42	33	42	30	48	8	12	120	80
REAGAN B	930	31' X 30'	11'0"	80	36	27	36	24	30	5	9	100	50
<b>OUTDOOR VENUES</b>													
WEDDING GROTTO	1,000	-	-	230	-	-	-	-	-	-	-	-	-
SPA LAWN	2,500	-	-	240	-	-	-	-	-	-	-	-	240
FRONT EVENT LAWN	25,000	-	-	-	-	-	-	-	-	-	-	-	-
MILL LAWN	6,500	-	-	-	-	-	-	-	-	-	-	-	-
MILL	4,014	67'6" X 60'	-	128	-	-	-	-	-	-	-	-	100

Meeting room capacities were determined using 60" rounds of 10 (rounds capacity), three chairs per 6'x18" table (u-shape hollow square, classroom and conference style capacities) allowing for minimal audiovisual equipment.



**OMNI BEDFORD SPRINGS RESORT**  
**2138 BUSINESS 220,**  
**BEDFORD**  
**PENNSYLVANIA, 15522**  
**814. 623. 8100**  
**OMNIHOTELS.COM/BEDFORD-SPRINGS**

# Bedford highlights.

The charming town of Bedford, Pennsylvania is known for its rich traditions and centuries-old healing springs. Stroll through downtown to explore historic and cultural sites and experience friendly local shopping. Discover museums and art galleries or immerse yourself in kayaking, white-water rafting, fly fishing, hiking, biking and seasonal skiing nearby.

## AIRPORTS

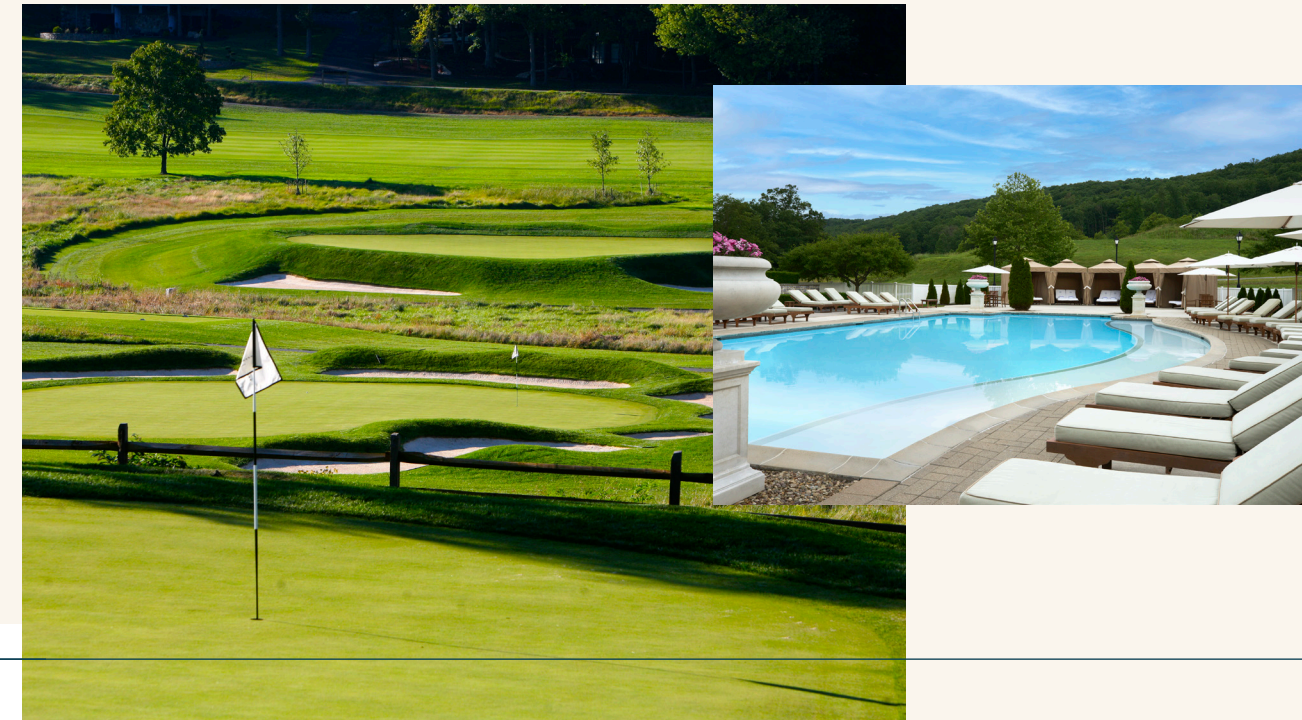
Bedford County Airport | 7 miles  
 Harrisburg International Airport | 109 miles  
 Pittsburgh International Airport | 125 miles  
 Dulles International Airport | 134 miles

## ATTRACTIONS

Downtown Bedford | 2 miles  
 The Espy House National Historic Landmark | 2 miles  
 Fort Bedford Museum | 2 miles  
 Old Bedford Village | 3 miles  
 Shawnee State Park | 13 miles  
 Blue Knob State Park | 25 miles  
 Covered Bridges of Bedford County | multiple locations

## ARTS & CULTURE

National Museum of the American Coverlet | 2 miles  
 Southern Alleghenies Museum of Art | 2 miles  
 Cumberland Theater, Maryland | 30 miles  
 Altoona Community Theater | 35 miles





OMNI BEDFORD  
SPRINGS

OMNIHOTELS.COM/BEDFORDSPRINGS  
PITBSR.LEADS@OMNIHOTELS.COM